

DD400 Diversion System

Model: DD400

Manufacture: Fox Environmental Systems

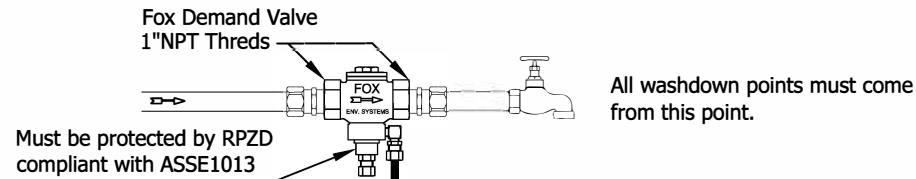
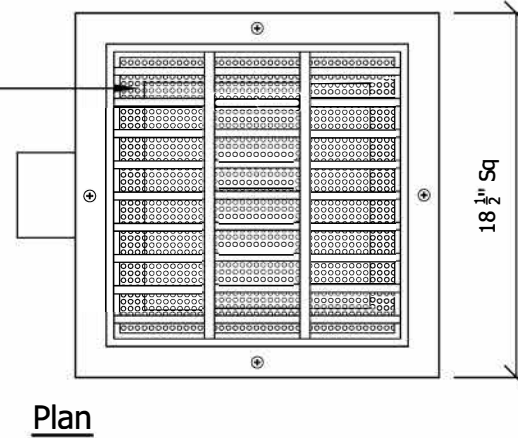
Max Working Pressure: 170 PSI

Grate Class: Class B Medium Duty

RPZ: Compliant with ASSE1013

Note:

This is a schematic representation only. Slab size and gradient to engineers details as arranged by customer. All plumbing and electrical connections to be installed by certified tradesmen in accordance with relative authorities requirements. Tradesmen to be engaged by the purchaser.

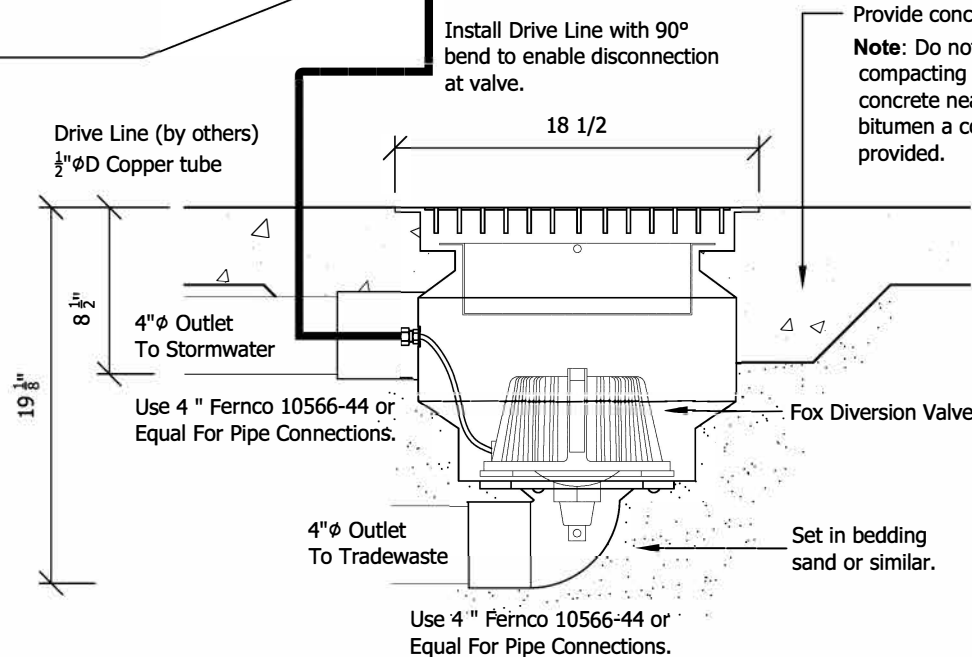


All washdown points must come from this point.

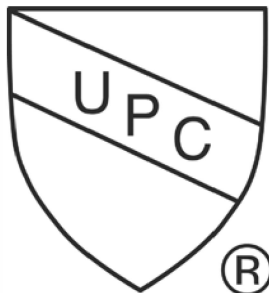
Placement of UPC Shield

Model: DD400 **Manufacture:** Fox Environmental Systems
Max Working Pressure: 170 PSI
Grate Class: Class B Heavy Duty
RPZ: Compliant with ASSE1013

Serial No.



Provide concrete thickening around pit.
Note: Do not distort pit walls when compacting concrete. Do not vibrate concrete near pit. If installed in bitumen a concrete collar must be provided.



IAPMO IGC 234 2016
 File Number 10153



Project	
Drawing Title	DD400 System

Drawn by:	J.F.S
Date:	25/01/2017
Scale:	1:10
Drawing No:	A4-SPEC-1001